

## Our Range

For further details on our zero point fixturing systems and any other workholding solution please contact:

**E:** [sales@craftsmantools.com](mailto:sales@craftsmantools.com)

**T:** +44 (0)1943 466 788

[www.craftsmantools.com](http://www.craftsmantools.com)

TOOLHOLDING

WORKHOLDING

SUB-CONTRACT MACHINING



**CRAFTSMAN  
TOOLS**

# Zero Point Fixture Systems



Zero-point Cruciform 250 x 250 x 410



**CRAFTSMAN  
TOOLS**

Collaborating with the World's Finest

Craftsman Tools Limited

Side Copse, Pool Road, Otley, West Yorkshire, LS21 1JE, U.K.

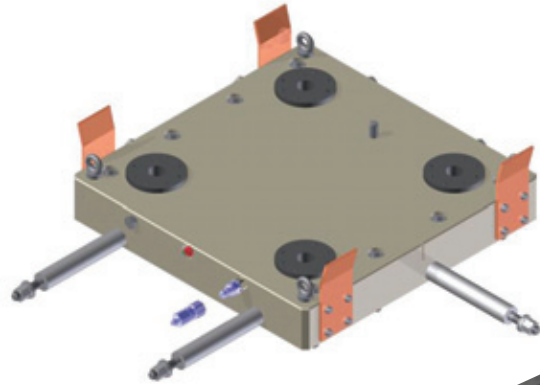
T: +44 (0)1943 466 788 F: +44 (0)1943 850 144

E: [sales@craftsmantools.com](mailto:sales@craftsmantools.com)



## What is Zero Point Fixturing?

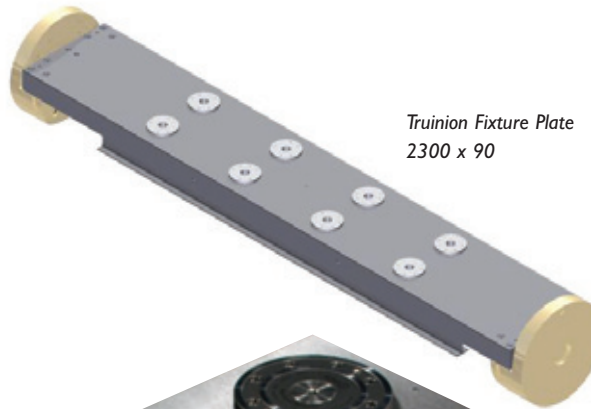
- A quick-change spring-hydraulic clamping system that ensures the correct position of parts whilst machining.
- Duplicate top plates permit next job to be set up off the machine.
- Once ready, a change of plates can be completed in minutes rather than hours.
- The clamping units mean that the top plate is placed in the correct location every time you set up for an operation.



Zero-point Fixture Plate  
620 x 620

## What are the applications?

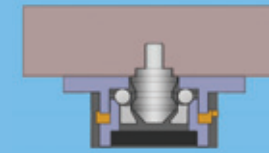
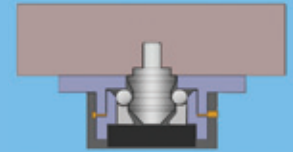
- Zero point fixturing can be used anywhere where there are large machining fixtures.
- Baseplates can be designed to fit any machining centre.
- Matching top plates can be used in any number of sizes.



Trunion Fixture Plate  
2300 x 90

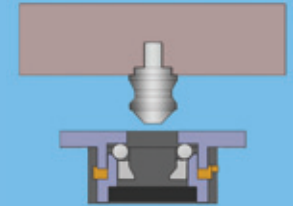
## How does it work?

1. In a rest position the clamp unit grips on to the clamping nipple to prevent movement



2. When pressurised, hydraulic fluid pushes the spring down releasing the ball bearings

3. This allows the top plate or fixture to be removed and replaced in minutes rather than hours



Zero-point Fixture Plate  
(16 clamping units) 1300 x 1300