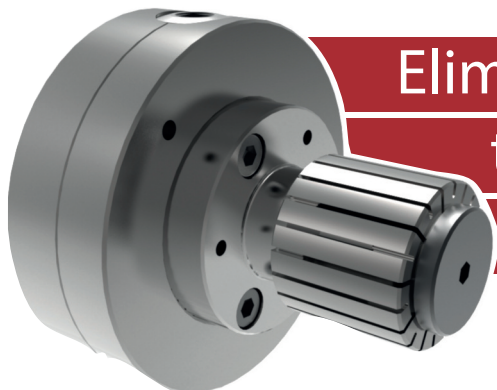








Quick change Gripping solution



Eliminate the need
to remove your
collet chuck

Introducing the new "PTG Quick Change" from (external) collet operation to (internal) mandrel gripping solutions without the need to remove the collet chuck or any adapter plate, a significant time saving in itself.

-  Clamp in any collet chuck system capable of gripping the 38,10 mm gripping shank of the adapter unit.
-  Use with existing drawbar and nut operated mandrel assemblies or mandrels and sleeves can be supplied ranging in size from 12,00 to 82,00 mm.
-  Peripheral manual clamping adjustment through a square key driving a precision geared drive, precision ground square and concentric component accuracy will be within 0.012 mm
-  Manufactured from highly durable high grade carbon steel, providing a rigid platform on which to mount the standard PTG range of drawbar mandrels.
-  Can be loaded with a mandrel assembly offline saving valuable time and be moved from machine to machine as the production schedule demands
-  Significant upgrade for any CNC single spindle lathe.

 **PTG**
workholding limited



BRITISH MADE AND EXPORTED ACROSS THE WORLD

+44 (0)117 970 1101

www.ptgworkholding.co.uk